

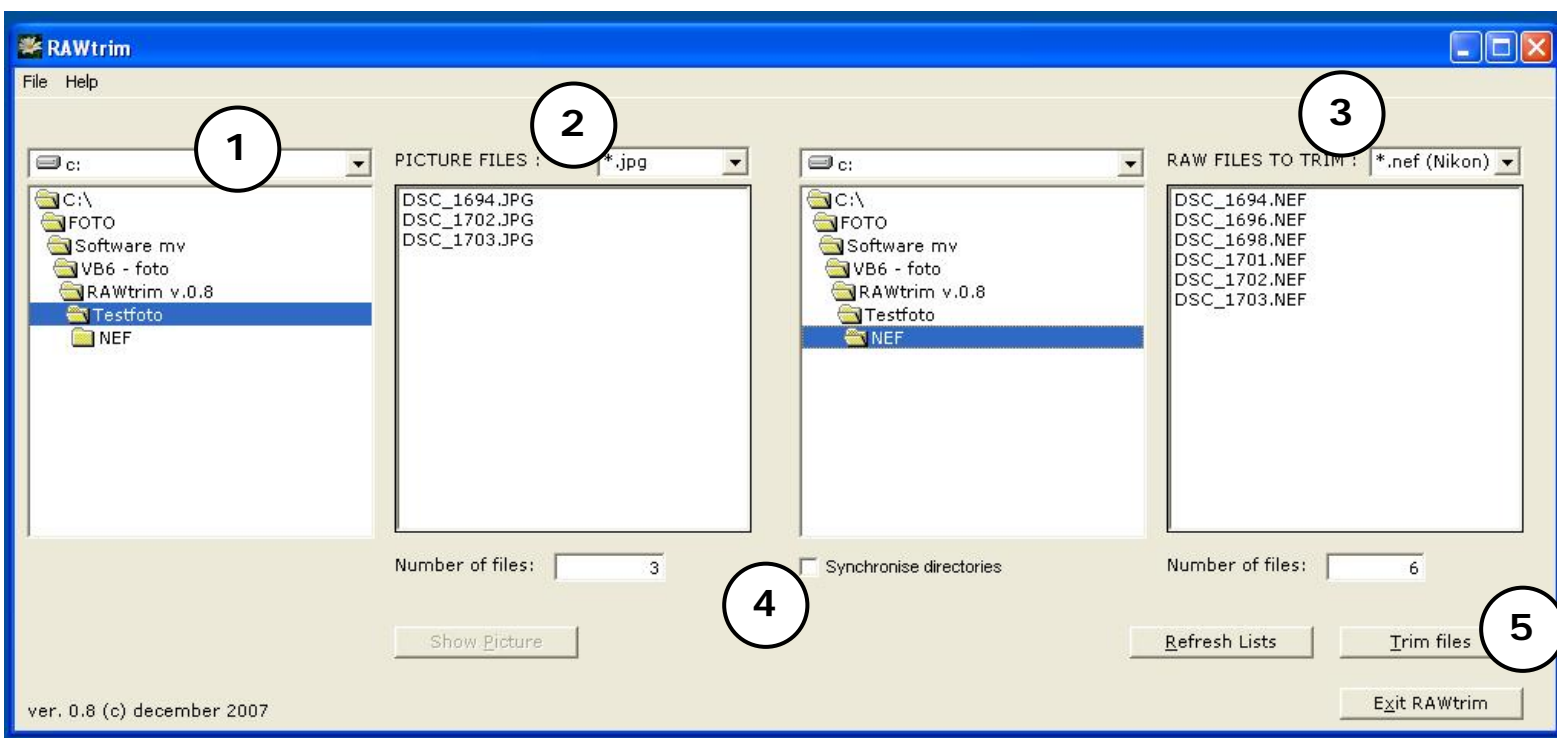
## RAWtrim

When photographing digitally using RAW file format the camera will often also process the RAW file and make a picture file thus you have a RAW file and a picture file (typically a .jpg-file) with the same file name but different file extensions.

After photographing and transferring of files to your computer you can easily and fast browse the picture files and delete the unwanted picture files. RAWtrim will then save your time, efforts and mistakes by deleting (trim) the RAW-files you don't need by checking if the picture-file exists. If the picture file does not exist RAWtrim will delete the corresponding RAW file.

To use RAWtrim start the program and select your drive and directory (1). Select the pattern of the picture files (2) here shown as \*.jpg. Then select the pattern of the RAW files (3) here shown as \*.nef files which are Nikon's raw-format. The two filelists below are the picture files and raw files in the chosen directory. By unchecking (as shown here) the 'Synchronise directories' checkbox (4) you can use different directories and even different drives.

Supported picture files are jpg, tif and tiff. Supported RAW file extensions are nef (Nikon), crw and cr2 (Canon), kdc and dcr (Kodak), mrw (Minolta), orf (Olympus), dng (Adobe), ptx and pef (Pentax), arw (Sony), raf (Fuji) and x3f (Sigma).



By pressing the [Trim files] button (5) RAWtrim will delete all RAW files without a corresponding picture files. In this case 3 files will be deleted. The files will actually not be deleted but merely put into the recycle bin – should you regret.

If you select a picture file in the filelist the [Show Picture] button will be enabled and by pressing this you will see the picture in a small window.

If you have any questions or comments please use e-mail: [preben@mitdigitaleoje.dk](mailto:preben@mitdigitaleoje.dk)